

Welcome to the
Middle Methow Fish Habitat Project News
The latest update on habitat projects and fish
status in your neighborhood

Middle Methow Reach Assessment Completed

The *Middle Methow Reach Assessment* by the Bureau of Reclamation is now complete. The reach assessment, a scientific study to understand ecological and physical processes along a specific section of a river, looked at conditions along the Methow River between Winthrop and Twisp. The study identified projects that would benefit en-

dangered and threatened fish and help increase their productivity in the river.

The study also helps establish baseline conditions for future monitoring for

effectiveness of projects. Data in the assessment was collected during field surveys and remote sensing in 2008, 2009 and 2010. The researchers collected information on stream flows, fish species, riparian vegetation, topography, river bed material, and location and amount of large fallen trees along the shoreline and in the river.

The complete document and appendices are available at: www.usbr.gov/pn/programs/fcrps/thp/ucao/index.html.



Photo: USBR

How Will We Know if Habitat Projects Work ?

The U.S. Geological Survey (USGS), funded by the Bureau of Reclamation, is conducting a monitoring program in the Middle Methow to better understand how habitat projects effect endangered species. They are collecting and analyzing physical and biological data before and after habitat improvement projects. These studies help determine the type of habitat fish are using and if more habitat improvements are needed to increase fish productivity in the Methow River.

Contact: Wesley Tibbits, USGS, Columbia River Research Laboratory, 509-997-0640 ext.268

The Methow Restoration Council

The Methow Restoration Council (MRC) formed in 2003 as an informal group to coordinate activities that restore the health and status of native fish populations and their properly functioning habitat in the Methow River and its tributaries. The MRC is the local Watershed Action Team that facilitates implementation of the Upper Columbia Spring Chinook Salmon and Steelhead Recovery Plan in the Methow watershed.

It is the primary entity responsible for identifying, prioritizing, monitoring and adapting locally sponsored habitat improvements. This effort helps assure local citizen involvement in creation of projects that improve fish productivity and habitat resiliency, and that address the concerns of landowners in the area.

Middle Methow Fish Habitat Project Contacts:

- Methow Salmon Recovery Foundation, Chris Johnson, 509-996-2787
- Yakama Nation Upper Columbia Habitat Restoration Project, Hans Smith, 509-996-5005
- Reclamation Methow Sub-Basin Liason, Jennifer Molesworth, 509-997-0640 ext260

You are invited to a Habitat Forum

Hosted by Methow Salmon Recovery Foundation,
Yakama Nation Upper Columbia Habitat Restoration Project and
U.S Bureau of Reclamation

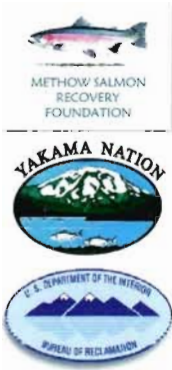
**September 20 at 6:30 PM at the Twisp Grange,
344 W. 2nd Ave. Twisp.**

For more information contact Michael Notaro, Watershed Resource Solutions, michael@mnotaro.com, (509) 429-2939

Meet with local representatives of salmon recovery partners working in the Methow Valley including:

- U.S. Geological Survey,
- Upper Columbia Salmon Recovery Board,
- Wild Fish Conservancy.
- WA Dept Fish and Wildlife

**We welcome your questions
and your interest**



Middle Methow Aerial Photo • Winthrop to Twisp

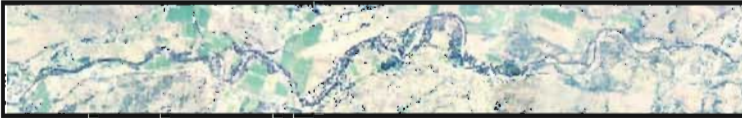


Photo-USBR

Ideas Abound for Fish Habitat in the Middle Methow

As a result of the Middle Methow Reach Assessment, we now know that important actions to improve fish habitat on this segment of the river include:

- protecting existing high quality habitat,
- adding log and rock features that make the river habitat more complex,
- improving fish access to side channels and wetlands,
- and improving irrigation efficiency.

Methow Salmon Recovery Foundation and the Yakama Nation want to discuss these opportunities with landowners and others interested in the Methow River. Input from the September 20th Forum, the first of several outreach efforts, will help shape the next steps salmon recovery partners are taking to develop fish habitat improvements along the Middle Methow Reach.

Landowner Participation Needed for Next Steps in Salmon Recovery

The Methow Salmon Recovery Foundation and the Yakama Nation are hosting a forum for landowners on Sept 20 at the Twisp Grange at 6:30 PM. The Forum will introduce *The Middle Methow Reach Assessment* recently completed by the US Bureau of Reclamation.

The forum will include brief presentations on salmon recovery efforts in the Methow Watershed, a review of the Reach Assessment, and a chance to meet local representatives of the organizations engaged in the Middle Methow Fish Habitat Project. Presenters will be available after the program to address questions and concerns with participants. Landowners along or near the Methow River between Winthrop and Twisp, boaters, and the fishing public are specifically invited to attend this forum. For more information call Michael Notaro, 509-429-2939.

Did you know....

Adult Spring Chinook cross the Columbia Bar in March, reach the Methow in June and spawn in late August and early September.



Photo-K.Bevis

Summer Chinook spawn in early to mid-October

Watch for spawning salmon in your area.